



# GT Icon Extract v3.0

## Introduction

[What is GT Icon Extract?](#)

[Installation](#)

[License and Copyright](#)

[History](#)

## The Toolbar



[Extract button](#)



[Select All button](#)



[Setup button](#)



[About button](#)



[Help button](#)

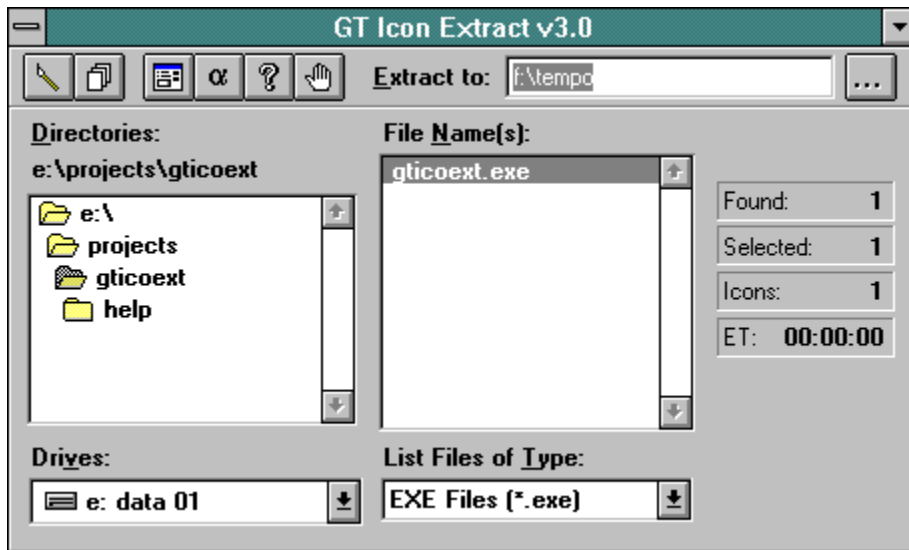


[Quit button](#)

## Methods

[Accessing the browse button with a keyboard](#)

## What is GT Icon Extract?



**GT Icon Extract** is a utility which extracts icon resources from Windows resource files. Resource files includes executables (.EXE), library files (.DLL and .VBX), drivers (.DRV), and probably some others I don't know of. The user interface has been made to be as friendly and as intuitive as possible so a help file should not have been necessary but here it is anyway.

## Installation

The following files are included in this distribution. Other than CTL3D.DLL everything should go into the same directory. CTL3D.DLL should go into your \windows\system directory.

Before copying it there, make sure there isn't one there already. If there is, compare the dates and replace it only if it is older than the one in this distribution. However, it's always a good idea to save a copy of the old file before overwriting it.

gticoext.exe	Main executable
gticoext.hlp	The help file (this thing you're reading)
ctl3d.dll	Dynamic link library that gives <b>GT Icon Extract</b> the 3D look.

## License and Copyright

**GT Icon Extract** is the copyright © 1993-1994 of George R. Torralba. Portions of this software is the copyright of *Microsoft* Corporation.

This software is provide for free. The author will not be responsible for damages, direct or consequential, arising from the use or installation of this software. **Use it at your own risk.** For bug reports, suggestions, and donations, you can reach the author at:

Email: [grtorlba@seattleu.edu](mailto:grtorlba@seattleu.edu)  
USMail: George R. Torralba  
8728 Phinney Avenue N. #8  
Seattle, WA 98103  
Phone: (206) 781-7622

## History

- Version 1.0 • Initial release, of course.
- Version 1.1 • Removed function that needed a 31K .dynamic link library which was accidentally left off from version 1.0 and caused the nasty "File not found" message.
- Version 2.0 • Rewrote icon conversion and other relevant code to C and offloaded to dynamic link library.
  - Other code enhancements.
- Version 2.2 • Bug fixes from the major overhaul in version 2.0.
  - Some cosmetic changes.
- Version 3.0 • Rewrote the damn thing from VisualBasic to C and redesigned the interface.
  - Extraction is really done on the file level. This means, the actual resource is taken from the file and rewritten to individual icon (.ICO) files. Previous versions loaded each icon and extracted the picture bits from there. This method was hardware dependent and would fail on some video subsystems. The new extraction method is independent and does not rely on the video hardware.
  - Renamed program files to be version unspecific, e.g., from "ico\_ex22.\*" to just "gticoext.\*".

**Extract**

Extract icon(s) from the selected file(s), if any.

## Setup

The **Setup** command allows you to change the

- default extract directory
- kind of icons to extract (color, monochrome, or both)

## **About**

Brings up the **About** dialog box. The **About** dialog box contains program version and program information.



## Select All

The **Select All** command selects all the files in the file listbox that contains an icon resource. This command is not available (the button is disabled) if there aren't any files listed in the files listbox.

## Help

Displays the help file of **GT Icon Extract..**

## Quit

Quits **GT Icon Extract**, what else.





## Browse button



The **Browse** button brings up a dialog box to allow you to choose a valid drive and/or directory.

## Accessing the browse button with a keyboard

To access the directory Browse button from the keyboard, select the **Extract to:** edit box and hit the Enter key on your keyboard.

